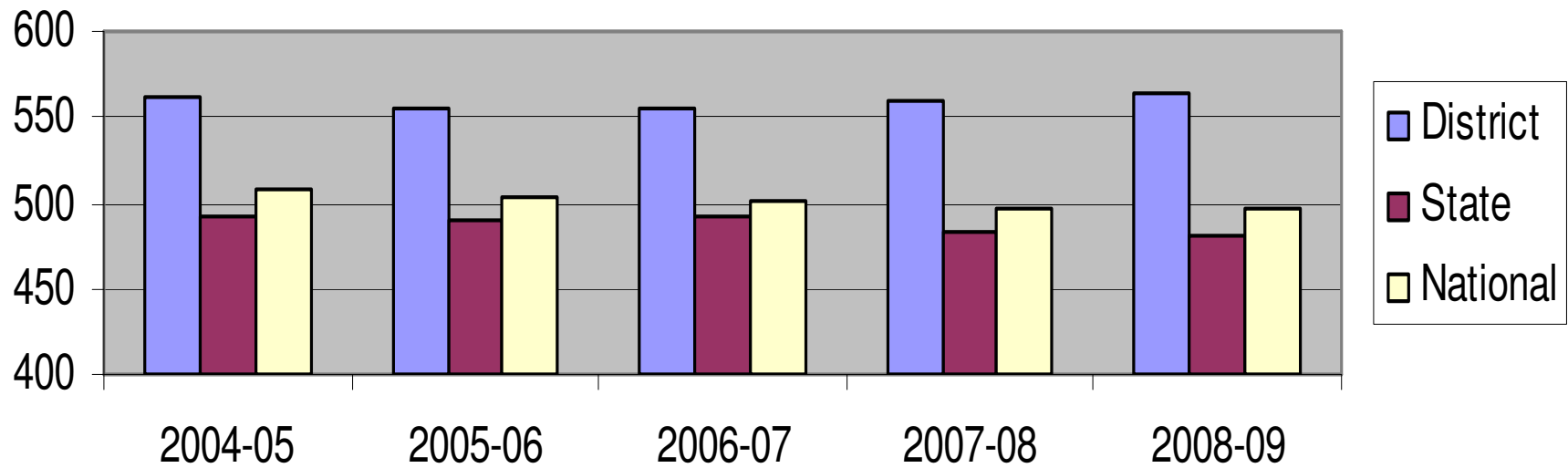


Plano Independent School District

Post Secondary Readiness Indicators 2009

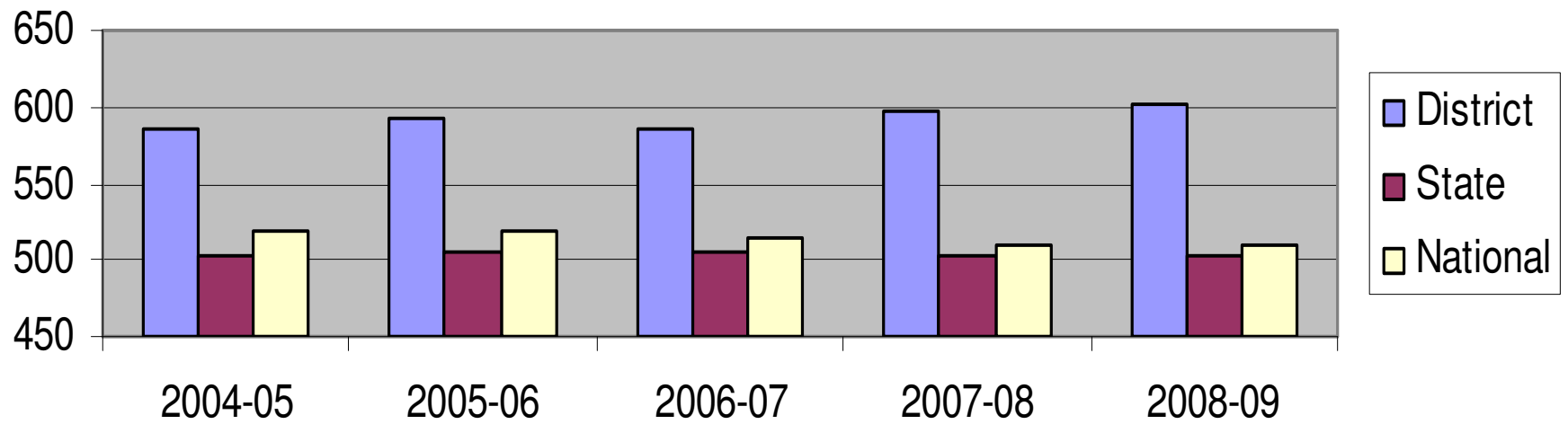
Paul G. Weaver
District Director of
Counseling and Guidance

SAT Critical Reading



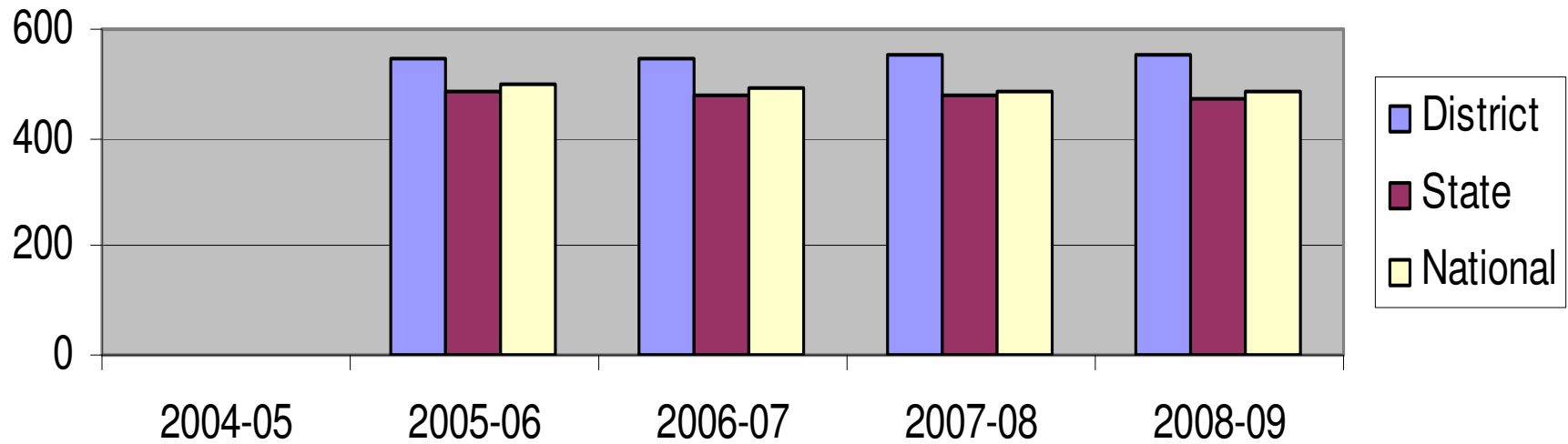
	2004-05	2005-06	2006-07	2007-08	2008-09
District	562	556	556	559	564
State	493	491	492	484	481
National	508	503	502	497	496

SAT Math



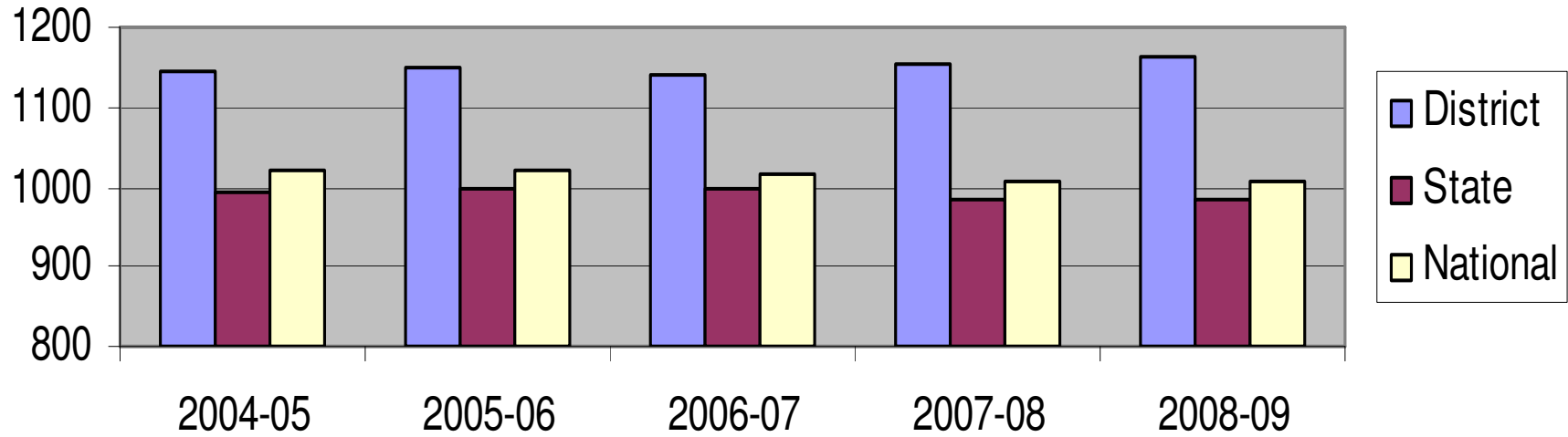
	2004-05	2005-06	2006-07	2007-08	2008-09
District	585	592	586	597	601
State	502	506	506	502	504
National	520	518	515	510	510

SAT Writing



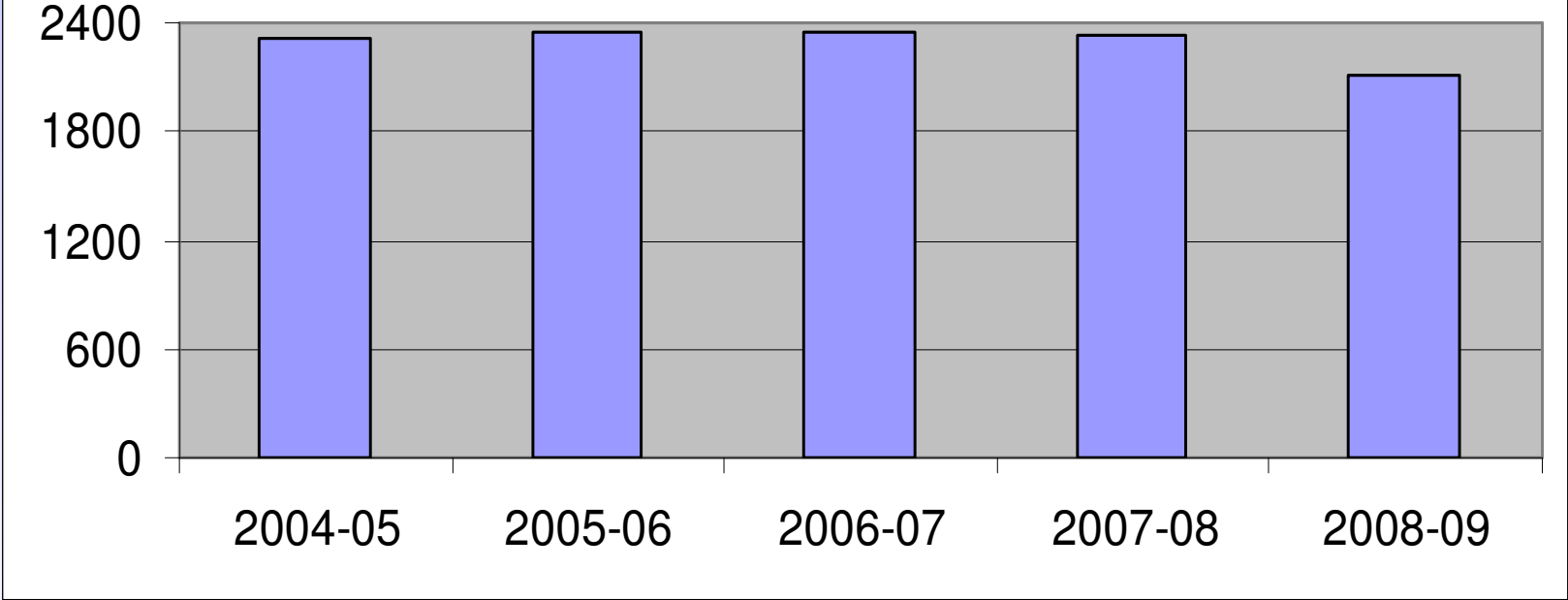
	2004-05	2005-06	2006-07	2007-08	2008-09
District	-	545	546	552	553
State	-	487	482	476	470
National	-	497	494	488	487

SAT Composite



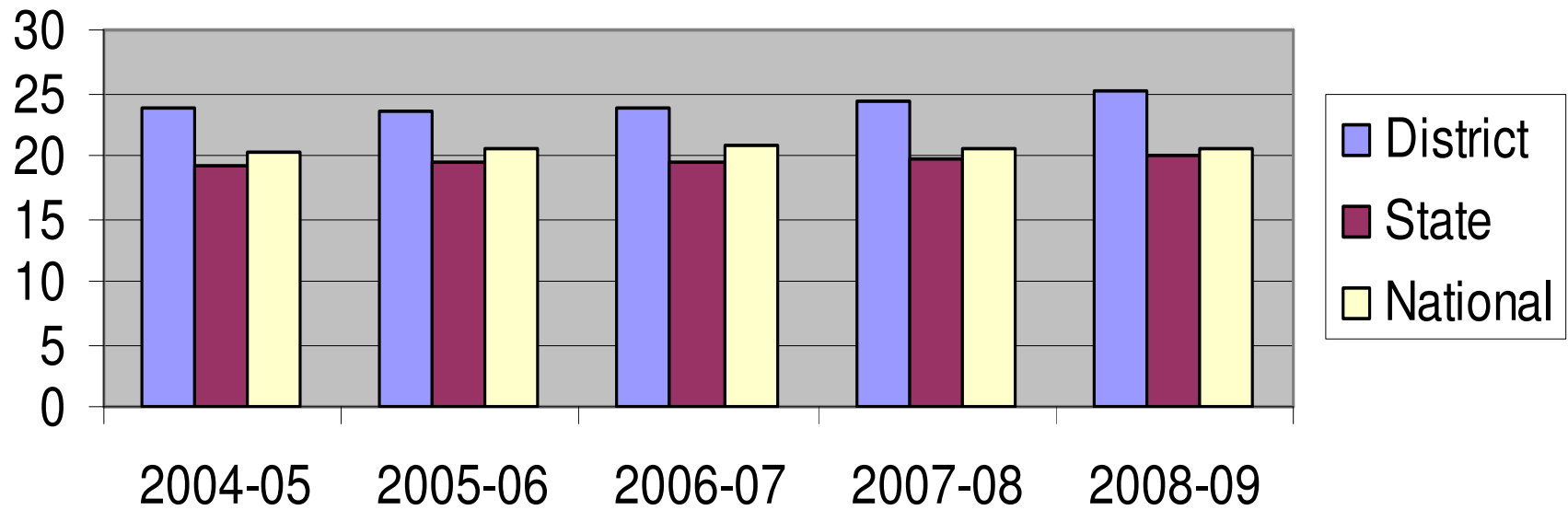
	2004-05	2005-06	2006-07	2007-08	2008-09
District	1147	1148	1142	1156	1165
State	992	997	999	986	985
National	1020	1021	1017	1007	1006

Number of Students Taking SAT



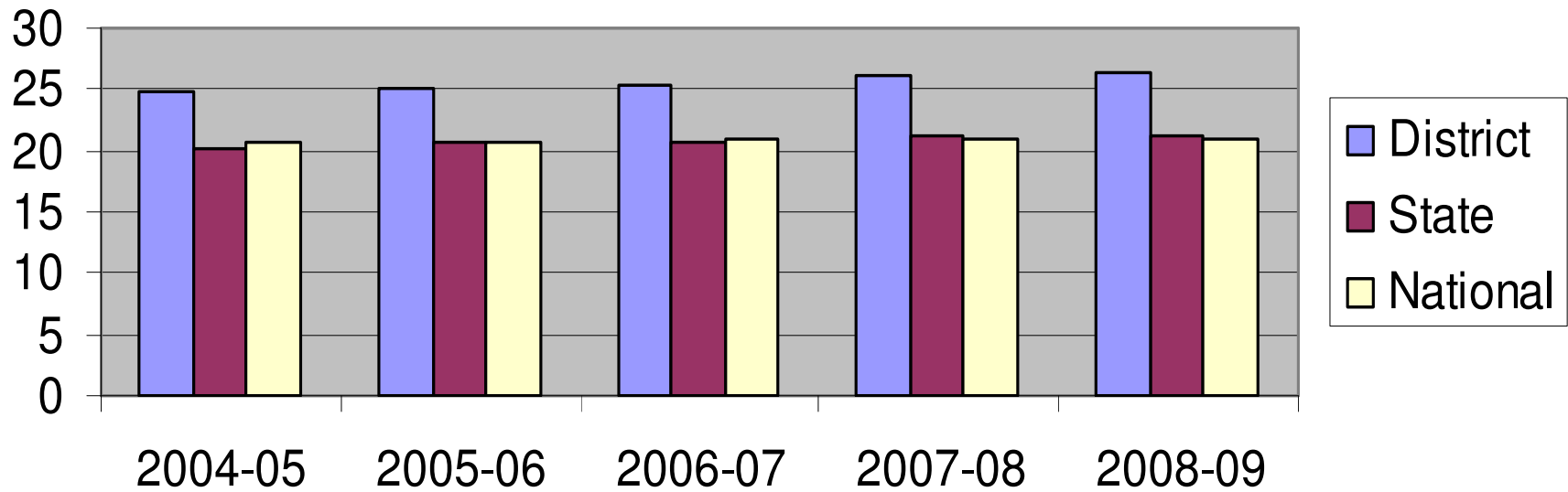
2004-05	2005-06	2006-07	2007-08	2008-09
2319	2352	2350	2328	2119

ACT English



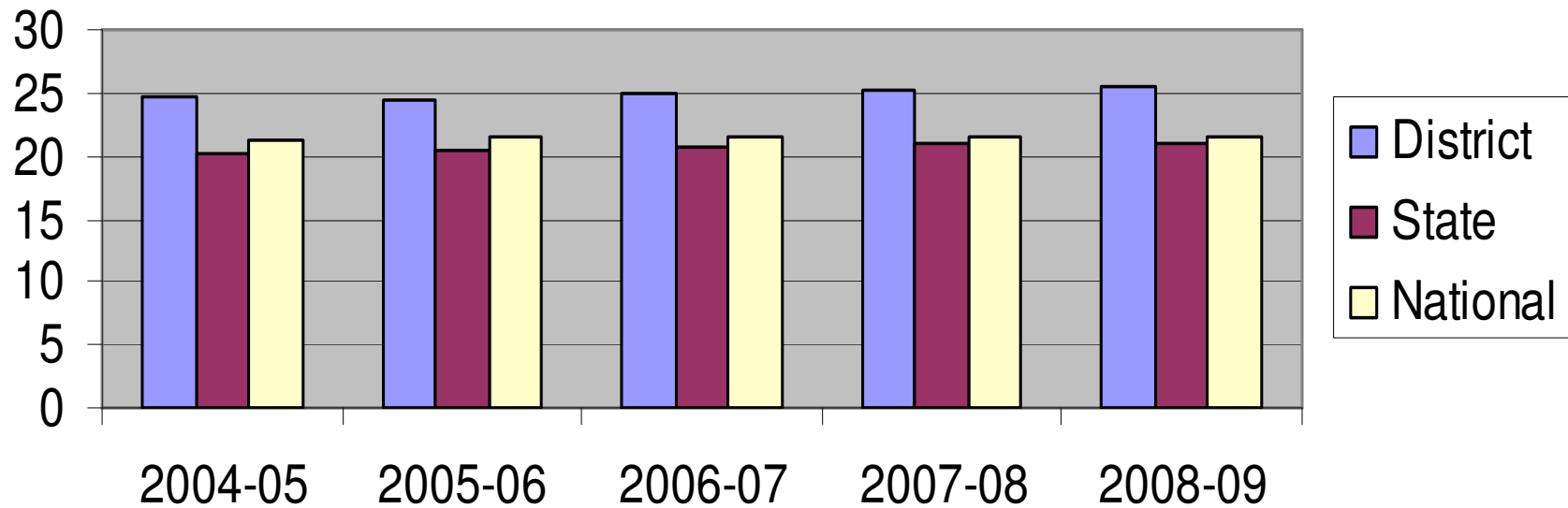
	2004-05	2005-06	2006-07	2007-08	2008-09
District	23.8	23.6	23.9	24.4	25.1
State	19.3	19.4	19.5	19.8	19.9
National	20.4	20.6	20.7	20.6	20.6

ACT Math



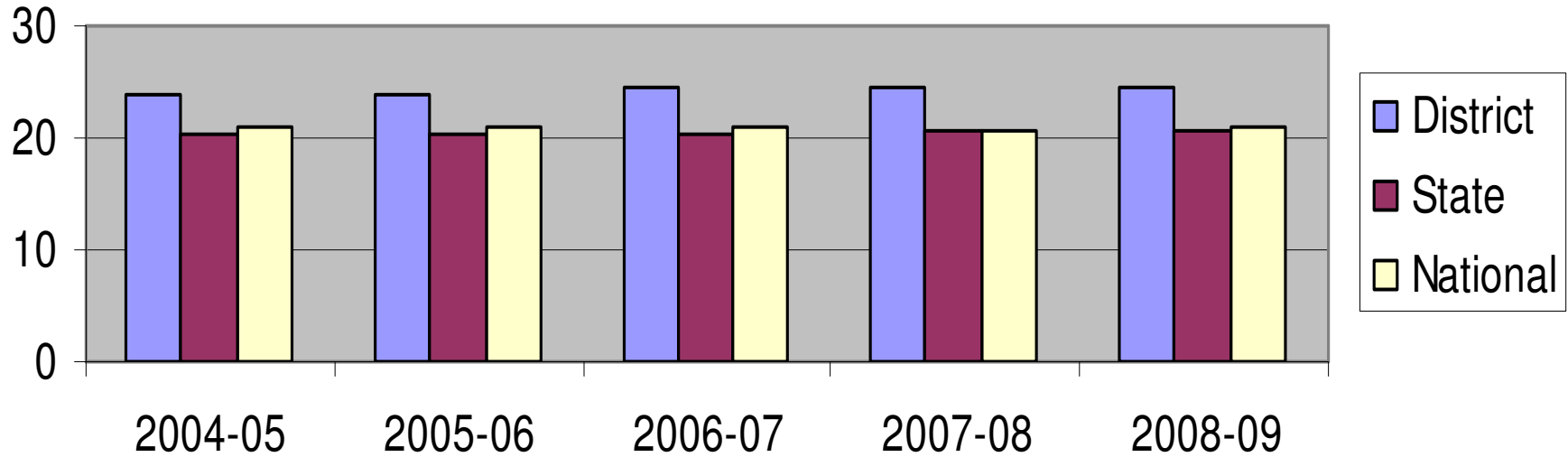
	2004-05	2005-06	2006-07	2007-08	2008-09
District	24.8	25.2	25.4	26.2	26.3
State	20.3	20.6	20.8	21.2	21.3
National	20.7	20.8	21	21	21

ACT Reading



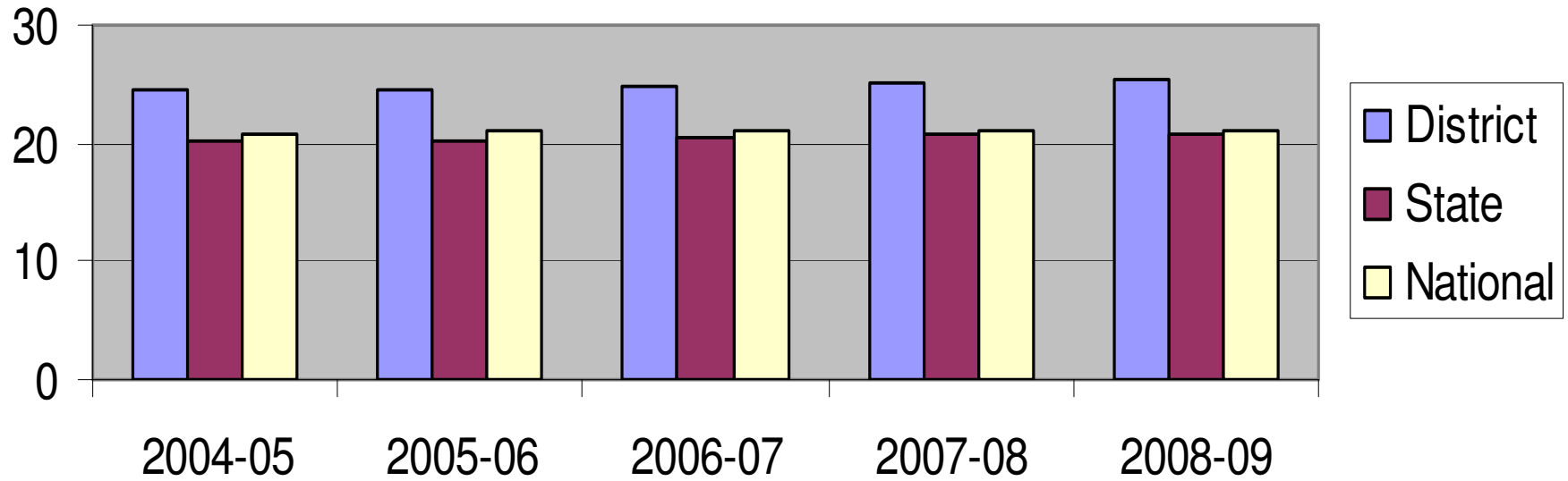
	2004-05	2005-06	2006-07	2007-08	2008-09
District	24.8	24.5	24.9	25.1	25.6
State	20.3	20.5	20.6	20.9	20.9
National	21.3	21.4	21.5	21.4	21.4

ACT Science Reasoning



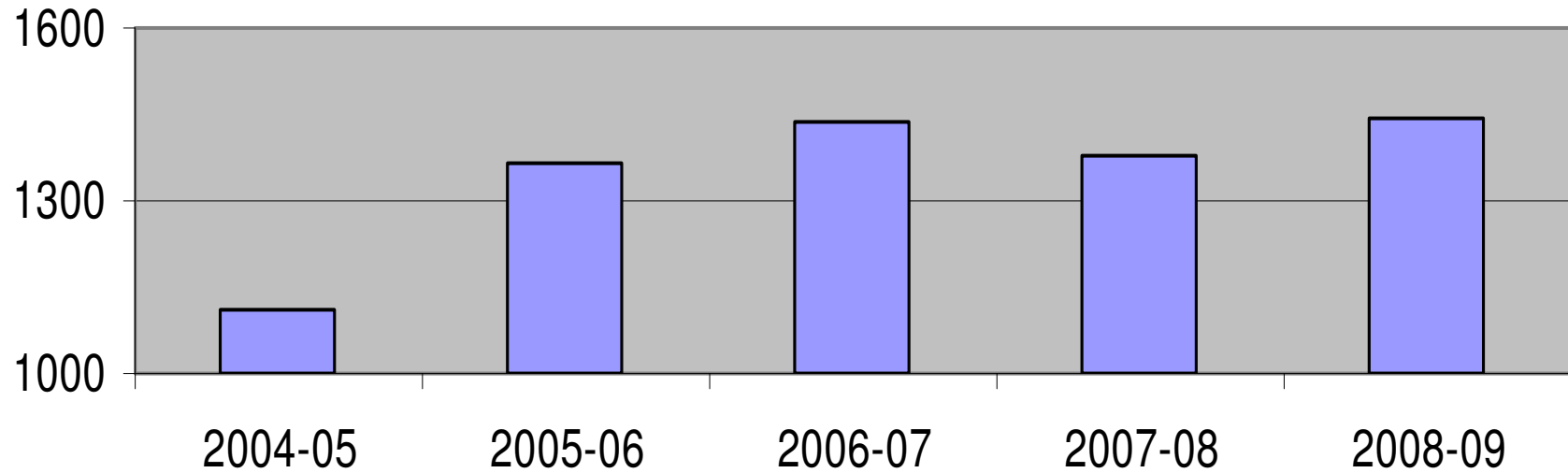
	2004-05	2005-06	2006-07	2007-08	2008-09
District	23.8	23.9	24.4	24.5	24.5
State	20.2	20.3	20.4	20.5	20.6
National	20.9	20.9	21	20.8	20.9

ACT Composite



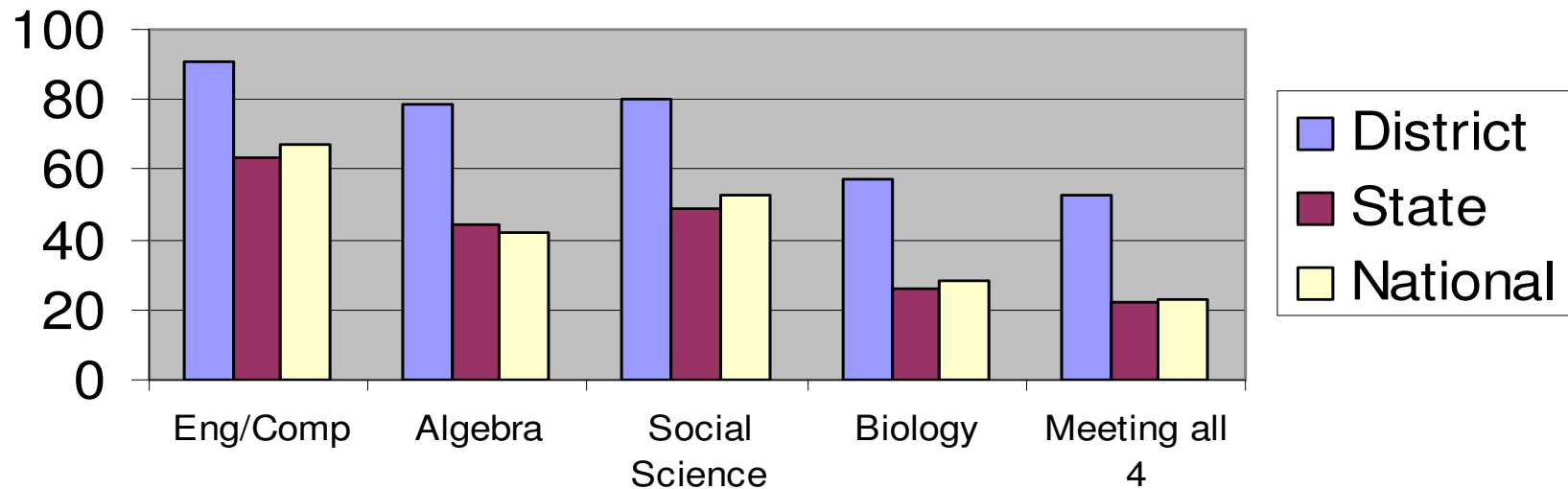
	2004-05	2005-06	2006-07	2007-08	2008-09
District	24.4	24.4	24.8	25.2	25.5
State	20.2	20.3	20.5	20.7	20.8
National	20.9	21.1	21	21.1	21.1

Number of Students Taking ACT



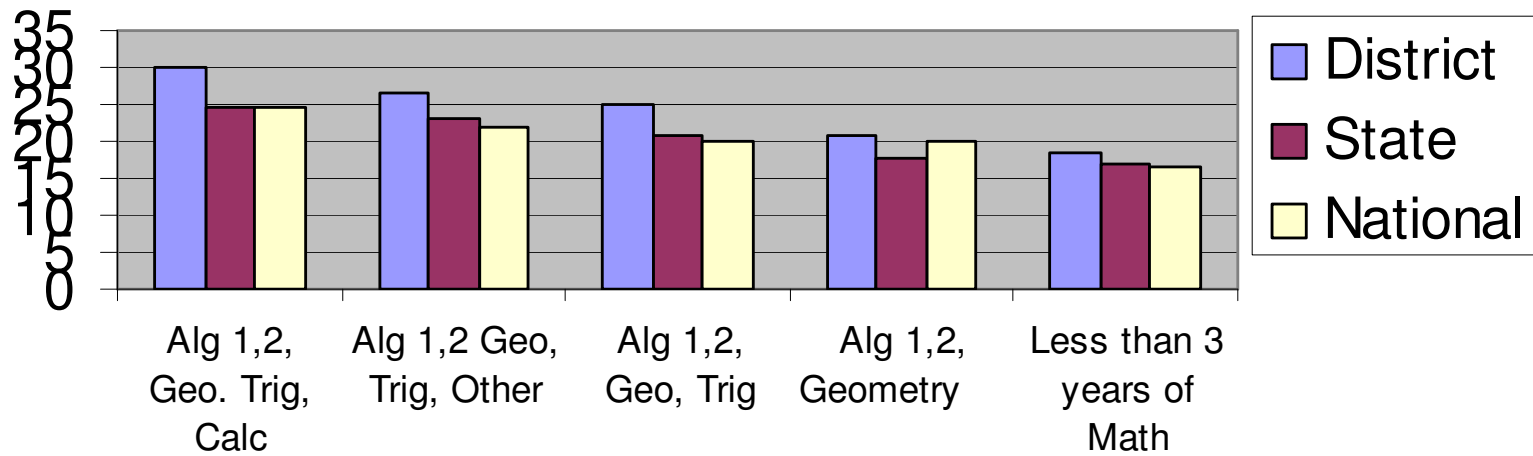
2004-05	2005-06	2006-07	2007-08	2008-09
1113	1362	1437	1379	1446

Percent of ACT Tested Students Ready for College-Level Coursework



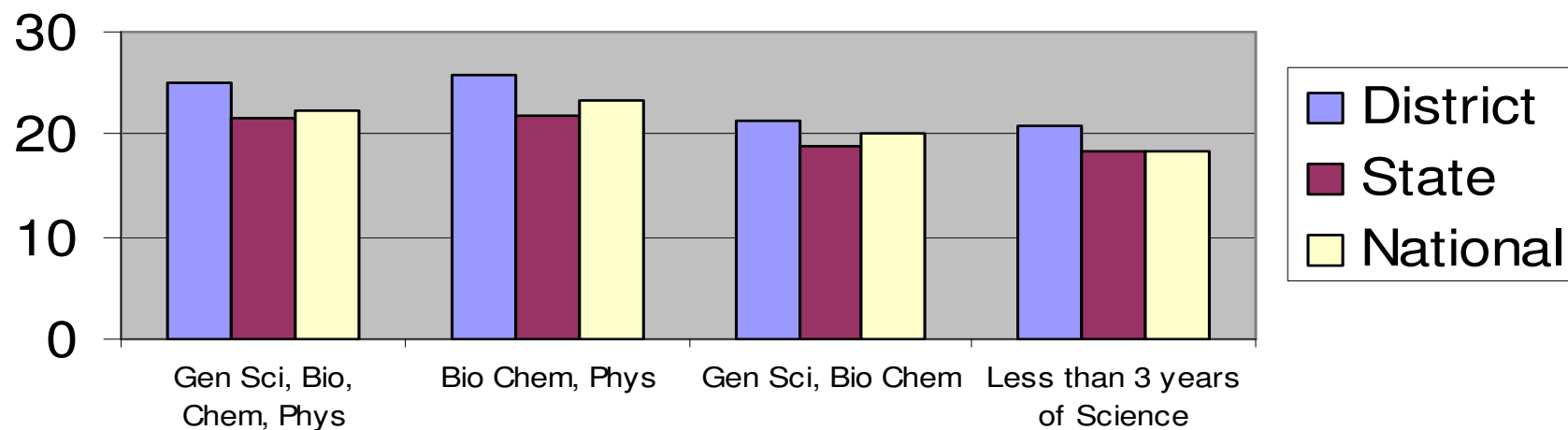
	District	State	National
Eng/Comp	91	63	67
Algebra	79	44	42
Social Science	80	49	53
Biology	57	26	28
Meeting all 4	53	22	23

Average ACT Math Scores by Course Sequence



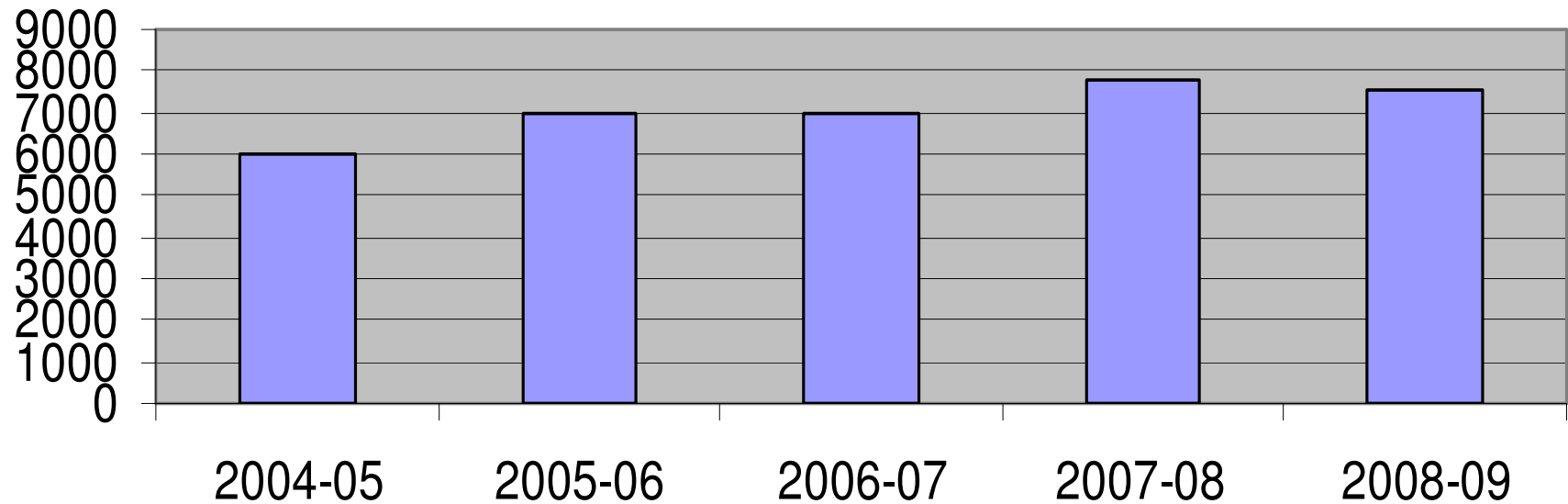
	District	State	National
Alg 1,2, Geo. Trig, Calc	30.1	24.7	24.5
Alg 1,2 Geo, Trig, Other	26.6	23	22.1
Alg 1,2, Geo, Trig	24.9	20.8	20
Alg 1,2, Geometry	20.7	17.7	20.1
Less than 3 years of Math	18.6	17	16.5

Average ACT Science Scores by Course Sequence



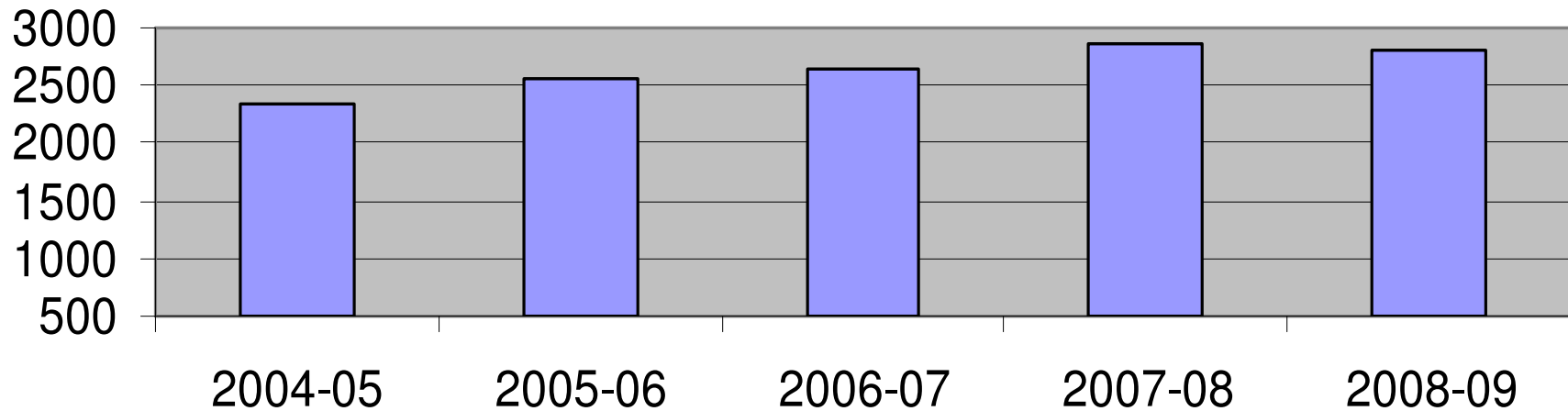
	District	State	National
Gen Sci, Bio, Chem, Phys	25	21.5	22.2
Bio Chem, Phys	25.7	21.7	23.3
Gen Sci, Bio Chem	21.4	18.9	20.1
Less than 3 years of Science	20.8	18.4	18.4

AP Tests Given at Senior Highs



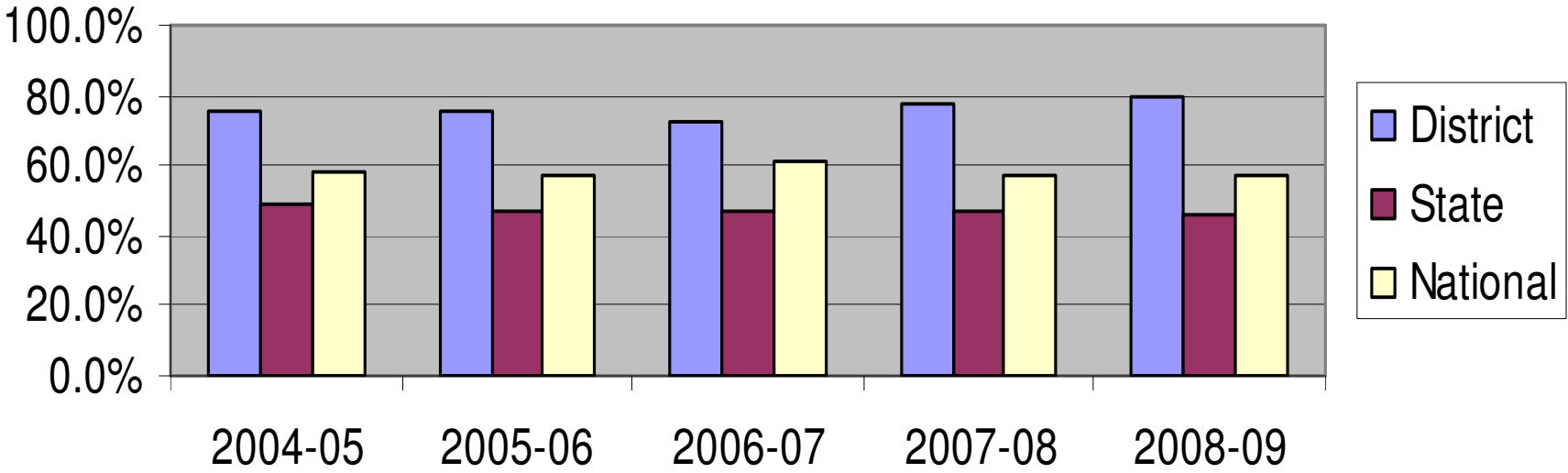
2004-05	2005-06	2006-07	2007-08	2008-09
5994	6964	6992	7784	7513

Number of Students Taking AP Tests - Senior Highs



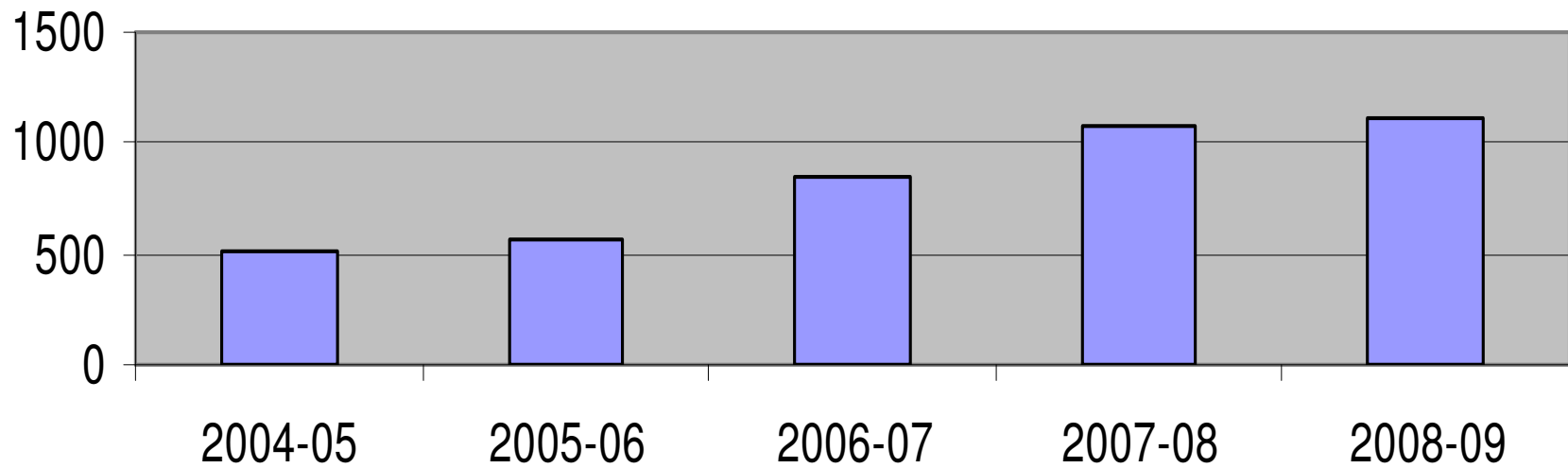
2004-05	2005-06	2006-07	2007-08	2008-09
2340	2547	2656	2864	2802

AP Tests with Score of 3 or Higher



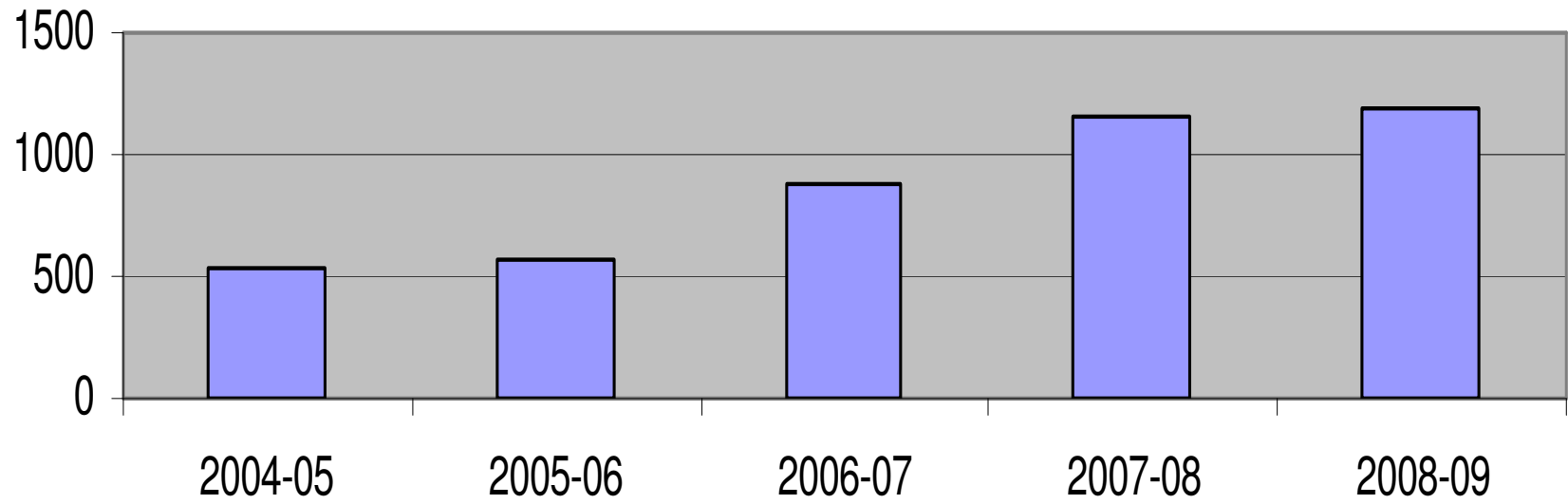
	2004-05	2005-06	2006-07	2007-08	2008-09
District	76.0%	76.0%	72.0%	78.0%	80.0%
State	48.6%	46.9%	47.0%	47.0%	46.0%
National	58.0%	57.5%	61.0%	57.40%	57.0%

Number of Students Taking AP Tests - High Schools



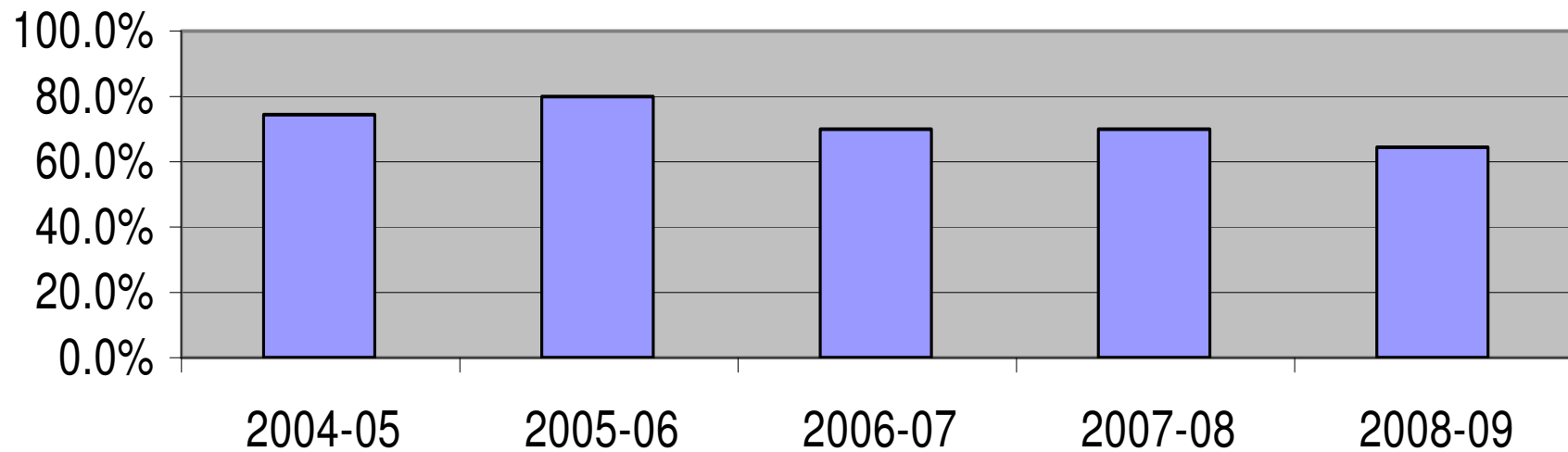
2004-05	2005-06	2006-07	2007-08	2008-09
506	563	850	1082	1109

AP Tests Given at High Schools



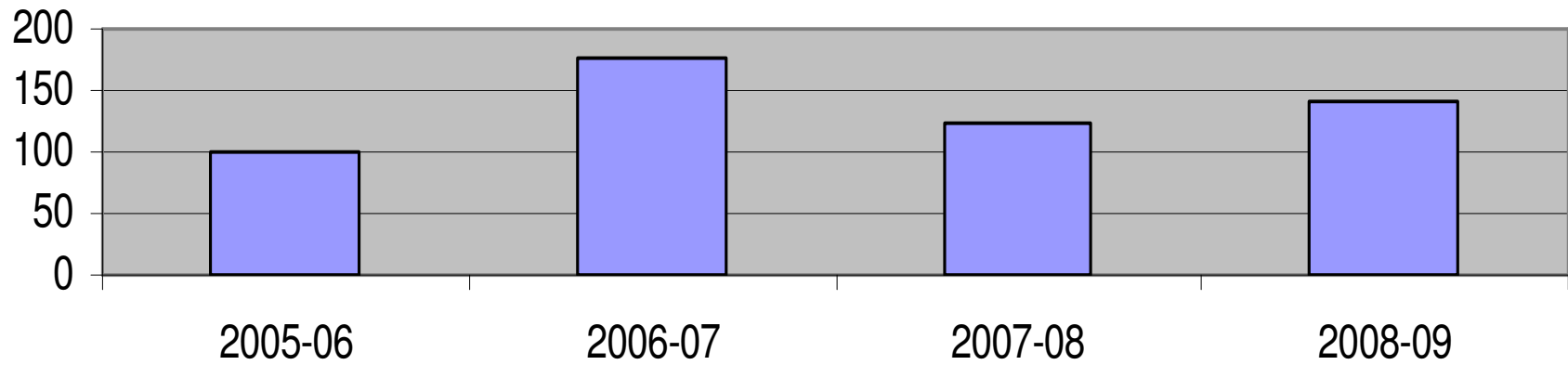
2004-05	2005-06	2006-07	2007-08	2008-09
526	574	873	1150	1192

AP Tests With Score of 3 or Higher - High Schools



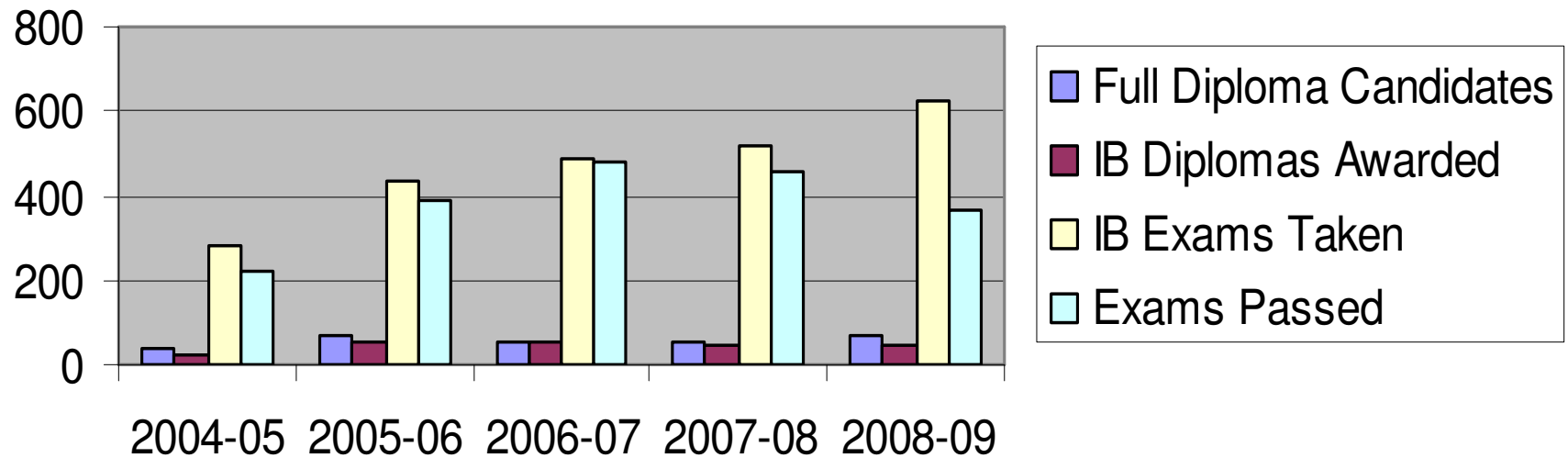
2004-05	2005-06	2006-07	2007-08	2008-09
75.0%	79.9%	70.0%	70.0%	64.0%

Number of Middle School Students Taking AP Spanish Tests



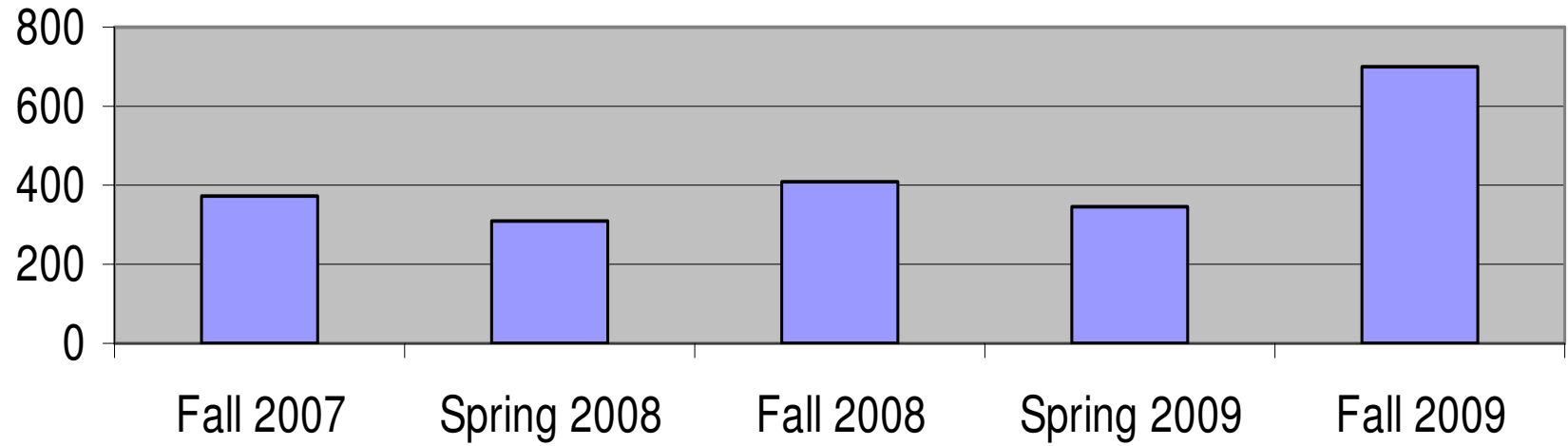
2004-05	2005-06	2006-07	2007-08	2008-09
-	101	175	124	142

IB - Plano East



	2004-05	2005-06	2006-07	2007-08	2008-09
Full Diploma Candidates	37	68	57	57	68
IB Diplomas Awarded	26	53	51	44	44
IB Exams Taken	282	434	488	519	623
Exams Passed	218	388	483	459	362

Dual Enrollment



Fall 2007	Spring 2008	Fall 2008	Spring 2009	Fall 2009
374	313	411	350	701