

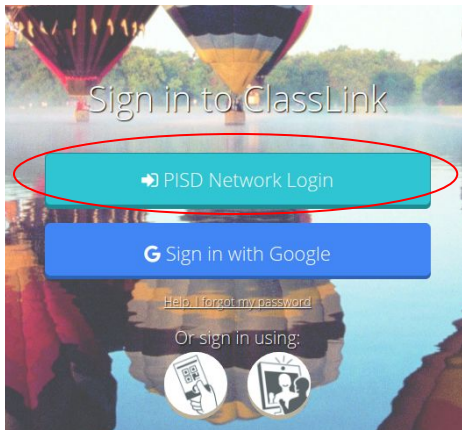


Quick Guide

Log in once and PISD Webdesk gives you access to all your digital content and files from any device , anywhere, and anytime.

1. Sign In

1. Go to webdesk.pisd.edu
2. Click on PISD Network Login and sign in using your district username and password.
3. You can alternatively sign in using Google or a QR code (setup required).



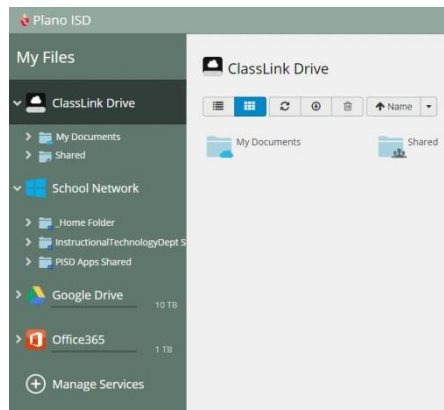
2. My Profile

Here is where you change your profile picture, access your password locker, sign in with options, and password recovery options.



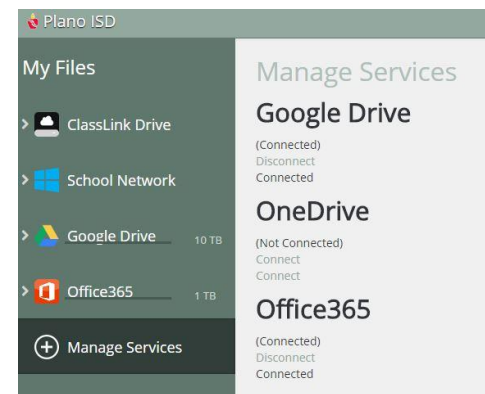
3. My Files

My Files > School Network allows you to access your school network drives (H: drive) from any device, anywhere, anytime. You can easily transfer files to/from your cloud drives and school network drives with just a drag and drop motion.



4. Cloud Drives

My Files > Manage Services > Connect allows you to connect other Cloud services in Webdesk to access all of your files in one location! Use your district email address and password to connect your cloud drives.





Quick Guide

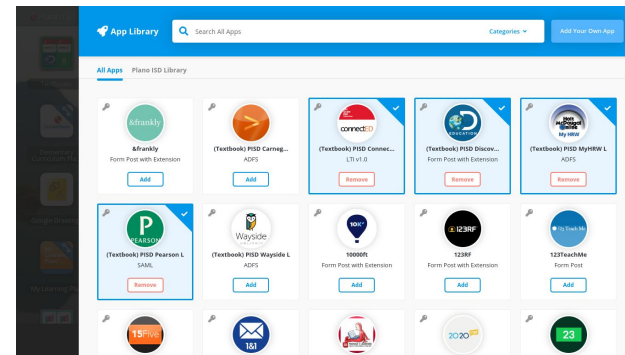
5. My Apps

The My Apps screen is where all of your online resources will be located. Enter your username and password once (if prompted) and Webdesk will remember it for you!



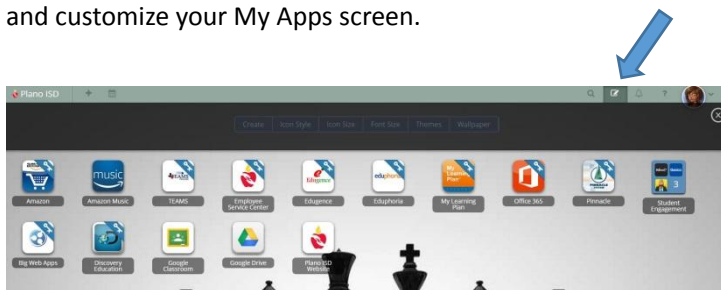
6. App Library

The library contains over a thousand educational resources to choose from. Click the Plus (+) on the top left of the My Apps screen. Click Add on any app to place it on your dashboard. Search for your favorite apps or choose from a list of categories. You even have a specialized list just for Plano ISD.

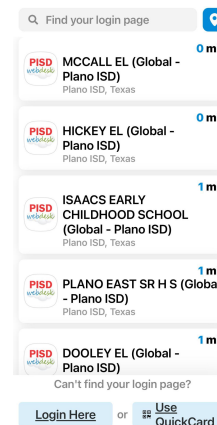


7. Edit Mode

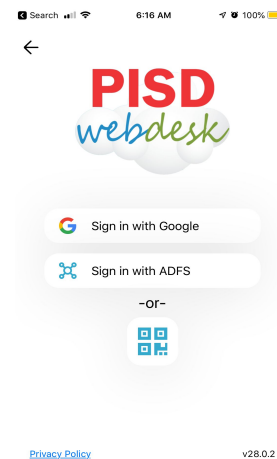
To go into Edit Mode, click the paper and pencil symbol on the top right of your screen. While in Edit Mode, you can delete apps, create folders and customize your My Apps screen.



8. iOS and Android App



Want to use your device? Go to the iOS App Store or the Google Play Store to download Classlink. Once you open the app, find your login page (home campus). No need to enter a username and password as long as you choose Sign in with Google.



Questions?
Please contact Instructional Tech at pisd.hotspot@pisd.edu

