



2024-2025 AHS General FAQ's

What time does school start and end?

- School starts at 9:05 and ends at 4:30

How early can learners be dropped off in the mornings?

- Learners may enter the building as early as 8:30 AM.
- Learners are expected to sit in the cafeteria or the Commons. Learners are NOT allowed to access any other parts of the building before 9 AM.

What time are learners expected to leave the building?

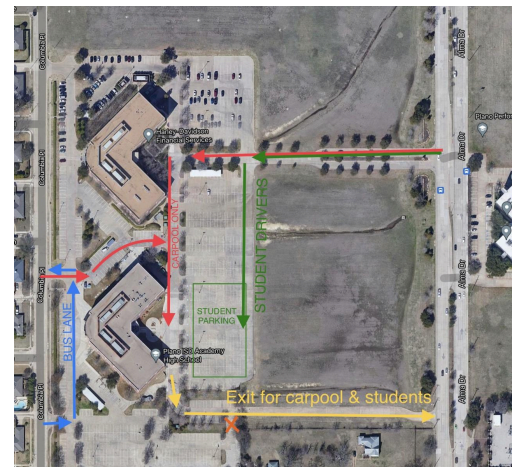
- Learners should be picked up by 5:00 PM at the latest.
 - Learners who walk or who ride with a parent exit the front door.
 - Learners who ride the bus exit through the back door of the cafeteria.

What is the bus transportation schedule for AHS?

- The 2024-2025 Academy transportation schedule is [linked here](#) for your review.

What is the preferred traffic pattern for drop-off and pick-up?

- Drop-off and pick-up take place in the front of the building, which is on the East side.
- The preferred traffic pattern is North to South, which means the passenger side door would be closest to the entrance as shown in the image here. We ask that all drivers enter at the North entrance off of Alma only. The South entrance is an exit-only location.



How does my learner's schedule work at AHS?

- Schedule and Skyward information can be found in the [Schedule FAQ document](#).
- We are currently working on updating Skyward and course enrollments.
 - Schedules WILL change between now and August 13.
 - Students WILL be given an opportunity Thursday and Friday of the first week of school to request a schedule change with Mr. Rogers. We will not make individual schedule changes based on request until after August 13.

What events are taking place at AHS?

- **New Titan Camp**, offered by learner-leaders for First-Year learners, will take place on August 12, 2024, at Academy High School. This event is for 1st-year learners only, no parents, please. [Learners may RSVP here](#).
- **The Back-to-School Bash** for learners **AND** parents will take place on August 16, 2024, from 3:45 to 6:30.
 - Discover your passions at the Club Connections Zone where you can explore and engage with various school clubs.
 - Enhance your high school journey at the Success Hub with workshops for students and parents.
 - Take advantage of the Feast & Fun Zone, where you can purchase dinner from In-N-Out Burger Truck, check out PTSA merchandise, and enjoy meet-and-greet opportunities to mingle and socialize with other Titan families.

How do I contact my learner's grade-level team or a specific facilitator on the team?

1st Year Facilitator	Course	Email
Dr. Amy Willerson (TL)	English 1	Amy.Willerson@pisd.edu
Summer Richie	World Geography/ AP Human Geography	Summer.Richie@pisd.edu
Kyle Goodwin	Physics	Kyle.Goodwin@pisd.edu
Gail Gumm	Algebra 1 or Algebra 2	Gail.Gumm@pisd.edu
Gwen Thomas	Principles of Applied Engineering/ Principles of Information Technology	Gwen.Thomas@pisd.edu
Amber Brown	Art & Media Communications 1	Amber.Brown@pisd.edu

2nd Year Facilitator	Course	Email
Ashley Wunder (TL)	English 2/ AP Seminar	Ashley.Wunder@pisd.edu
Brandy Richmond	World History/ AP World History	Brandy.Richmond@pisd.edu
Alex Spatter	Biology	Alexandra.Spatter@pisd.edu
Megan Gonzales	Algebra 2/Geometry	Gail.Gumm@pisd.edu

Amber Brown	Art & Media Communications 2	Amber.Brown@pisd.edu
-------------	------------------------------	--

3rd Year Facilitator	Course	Email
Shannon Carroll	English 3/AP English 3	Shannon.Carroll@pisd.edu
James Wright	US History/ AP US History	James.Wright@pisd.edu
Julia Goodwin	Chemistry/AP Chemistry	Alexandra.Spatter@pisd.edu
David Asfar	Pre-Calculus/AP Pre-Calculus	David.Asfar@pisd.edu
Tina Cone	Engineering Design & Problem Solving/ Digital Media	Tina.Cone@pisd.edu
Taylor Gilliam	Art 2	Taylor.Gilliam@pisd.edu

4th Year Facilitator	Course	Email
Shannon Donoghue	English 4	Shannon.Donoghue@pisd.edu
Marissa Pinder	Macroeconomics/ AP Macroeconomics & US Government/AP US Government	Marissa.Pinder@pisd.edu
Princy Sebastian	Scientific Research & Design	Princy.Sebastian@pisd.edu
Mark Wessels	AP Calculus/ AP Statistics/ Statistics	Mark.Wessels@pisd.edu

All Grade Levels	Role	Email
Catherine Gaschen	Principal	catherine.gaschen@pisd.edu
Edna Phythian	Asst. Principal	edna.phythian@pisd.edu
Brandon Rogers	School Counselor	brandon.rogers@pisd.edu
Donna Adams	School Nurse	donna.adams@pisd.edu
Trey Barnes	Special Education Dept Chair	trey.barnes@pisd.edu

Gerry Luna	Student Support Liaison (504)	gerardo.luna@pisd.edu
------------	-------------------------------	--

What should I know about AP at AHS?

- [Click here for the AP course Information.](#)
- If you are not signed up for an AP course that you would like to take, learners may submit a schedule-change request [HERE](#) by August 23, 2024.

What PISD device are learners provided?

- All AHS learners are issued a Chromebook.

What do I need to know about lunch at AHS?

- Lunch is scheduled daily from 12:30-1:30 PM.
- Learners can eat in the cafeteria, commons area, or outside in the activity lot.
- Third and Fourth Year learners may leave campus for lunch.
- **First and Second Year learners MUST stay on campus for lunch.**
- Learners may bring their lunch or purchase food and drinks in the cafeteria.

Can 9th graders and above transfer to Plano ISD Academy High School?

- **No**, the AHS course sequence is unique and the campus was designed to welcome new learners in only 9th grade. AHS is not able to enroll students past 9th grade.

Can I join clubs or participate in sports or music?

- AHS has some competitive clubs, but we can support most learner interests by providing choices on Flex Fridays. You have 3 Flex Mods you can use to research areas of interest, work on personal projects, learn more about the fabrication lab, learn on location, and much more.
- We want learners to have as many experiences as we can provide.
- There are NO UIL Sports. There is NO UIL Band/Orchestra/Choir. There are NO UIL Competitions at AHS.

Can you elaborate on the Flex Mod concept?

- Flex mods were created at learner request, and they are intentional opportunities every Friday afternoon to research areas of interest, work on personal projects, learn more about the fabrication lab, learn on location, and get extra help from facilitators as needed. Students may not leave campus during Flex Mods. Flex Fridays are learning days and they are an important part of each week of learning.

Do we have to pay to be a student in the academy?

- Plano ISD Academy High School is a public school that is part of Plano ISD. There is no tuition or fee to attend. The learning is challenging at AHS. You have to be independent as a learner, you have to think, and you have to constantly take feedback from peers, facilitators, and professional experts to make your learning evidence better.

How is GPA calculated and reported for college admissions?

- All Academy students receive a Cumulative GPA.
- Academy High School uses a proficiency-based grading system providing learners with specific feedback focused on academic growth.
 - Learners receive narrative feedback on formative and summative assessments, enabling them to improve their submitted work, extend their inquiry, and reflect.
 - Scoring is based on the demonstration of learning evidence. Official grades are given at the end of each semester.
- Course scores are documented as A+, A, B+, B, C, or F on the transcript. All high school courses are counted equally on a 4.5 weighted grade point scale.

What is Class Rank at AHS?

- Class rank is based on cumulative course score averages from grades 9-12. Each AHS course receives a maximum of 4.5 grade points.
 - Correspondence and online courses are not computed into class rank.
 - Credit by Exam courses are not computed into class rank.
 - Final rank in class and grade point average are determined at the end of the third nine-week grading period of the Senior year.
 - Plano ISD Academy High School does not rank learners beyond what is currently required by law, which is the top 10%. Learners in the Top 10% will have a certificate of rank provided with their transcript.
- Class rank is only calculated for learners in the Top 10% of their graduating class.

- Class rank will be calculated for the first time during the fall of a learner's 3rd/11th grade year.

My child is taking Algebra I at his current school, will this subject be credited in HS?

- **YES**, incoming 8th-grade students with Algebra 1 credit will take Algebra 2.

Once enrolled at Academy High School, if a learner decides it is not a good fit, are they able to transfer out?

- **Learners who choose Academy High School are making a 4-year commitment.**
- Learners who come to AHS come to become part of the AHS community and make meaningful contributions for all 4 years.
- Any request to transfer will only be reviewed in May.
 - **There are no transfers out of AHS during the school year.**

What are your admission requirements and selection processes?

- The AHS selection process is a lottery-based system.
- The initial application of interest opens in November and the initial lottery takes place in December.
- The process is the same for students transferring from a private school as it is for students attending a Plano ISD campus.
- [Click here for more information about interest & Timeline.](#)