



# PARENT NAVIGATOR *for* SPECIAL EDUCATION PARENTS



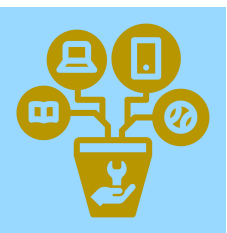
## What you will find

### Important for all Families



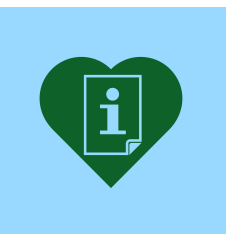
This section includes important resources that are considered to be "top of the list things to do."

### Resources



The resource section provides links for special education, program, and community resources.

### General Information



The sections below provide information regarding special education contact lists, acronyms, evaluations, IDEA, and more. There are also sections that include information you may need in regards to a particular time of year.

### ARD Process



In the Admission, Review, and Dismissal (ARD) Process sections you will find links to provide further information about the ARD and Individualized Education Plan (IEP) processes such as the ARD guide and procedural safeguards.

### Transition Support



Transition Support is for all ages (pre-k to adult). Additional information regarding these transitions by age level are linked below.

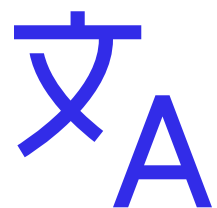
## How to Access



SCAN ME

<https://www.pisd.edu/page/21544>

## Translate



Click this icon on the web page to have the information on the site translated