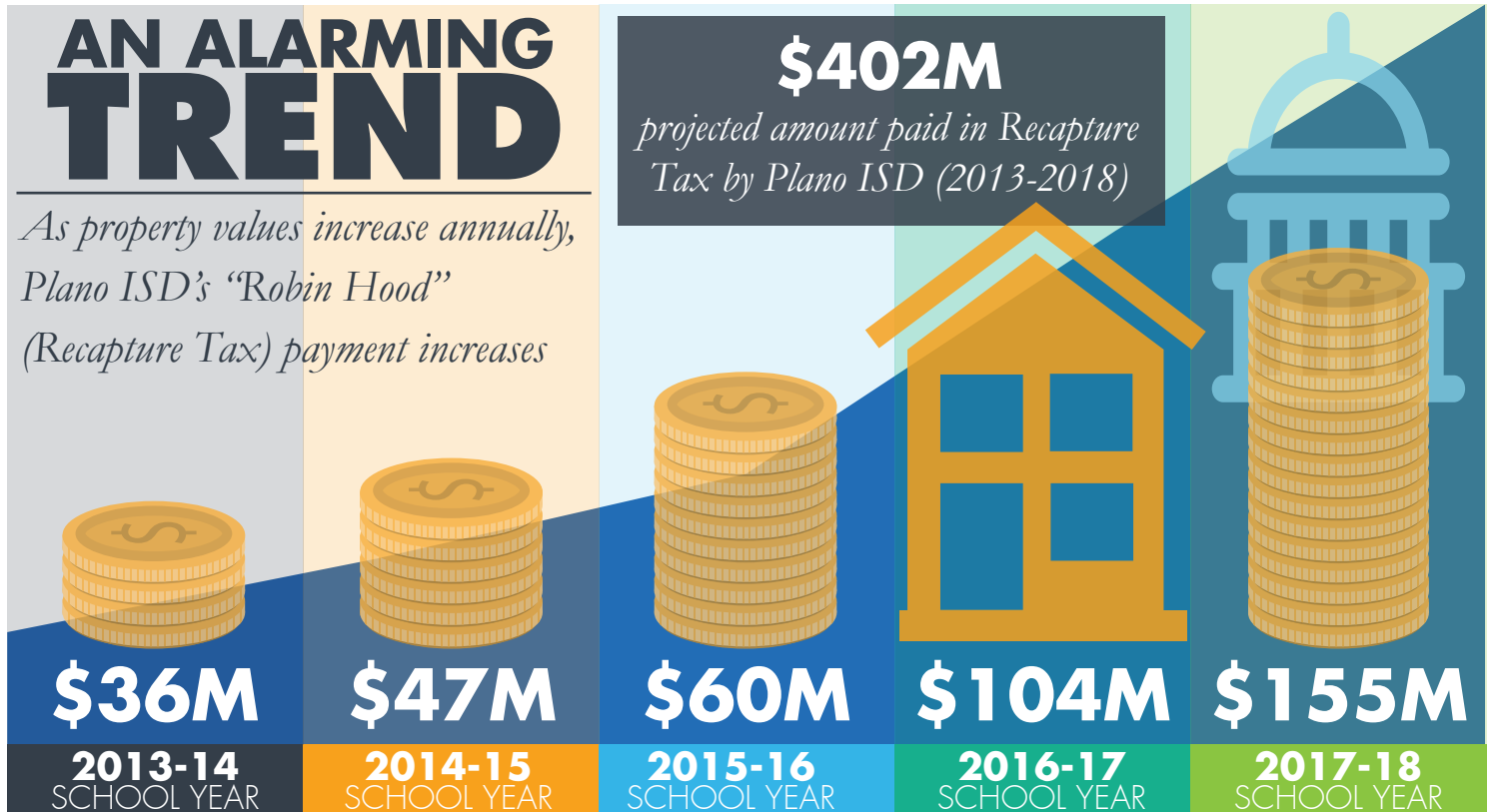


HOW "ROBIN HOOD"

IMPACTS PLANO INDEPENDENT SCHOOL DISTRICT

Plano ISD is classified as "property wealthy" and subject to the state's Recapture ("Robin Hood") Tax. This school year, Plano ISD's Robin Hood payment to the state is \$154.8M. This is more than 27% of your locally generated operating tax revenue. As of 2017-18, Plano ISD has paid **\$1.69 billion in recapture since 1993**.



PLANO ISD *by the numbers*

53,952
students served

30%
economically disadvantaged

14%
english language learners

How much per student does the state take?

\$2,869
recapture dollars per student

How much per school does the state take?

\$7.8M
approx. impact per senior high

\$3.5M
approx. impact per high school

\$2.7M
approx. impact per middle school

\$1.5M
approx. impact per elementary